



VIVIENNE A



Stefanie Bloom | 404.821.9807 | 8260 Wallace Wood Rd, Gainesville, GA 30506



678-578-6819
DAVID PATTERSON HOMES.COM

©2025 BHH Affiliates, LLC. An independently operated subsidiary of HomeServices of America, Inc., a Berkshire Hathaway affiliate, and a franchisee of BHH Affiliates, LLC. Berkshire Hathaway HomeServices and the Berkshire Hathaway HomeServices symbol are registered service marks of Columbia Insurance Company, a Berkshire Hathaway affiliate. All information is believed to be accurate but is not warranted and subject to errors, omissions, changes, or withdrawal without prior notice. Equal Housing Opportunity. ®

**BERKSHIRE
HATHAWAY** | GEORGIA
HOMESERVICES PROPERTIES

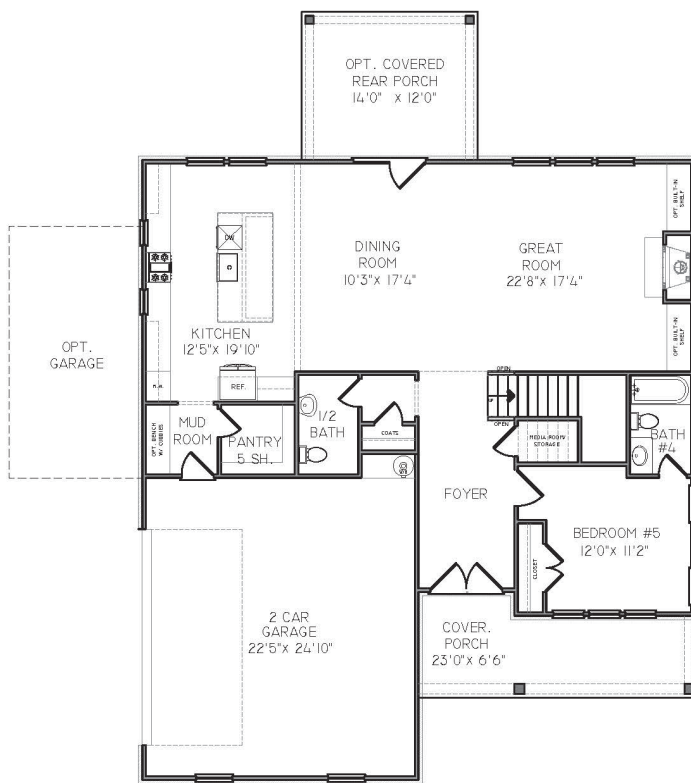
NEW HOMES DIVISION
CONDOS • SINGLE FAMILY • TOWNHOMES

5-19-25

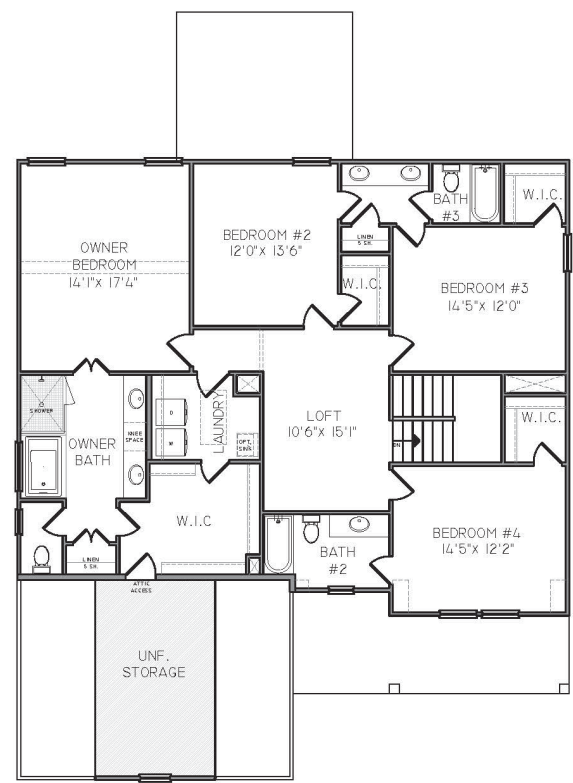


CREEKSIDE OVERLOOK

VIVIENNE A



1ST FLOOR



2ND FLOOR

Stefanie Bloom | 404.821.9807 | 8260 Wallace Wood Rd, Gainesville, GA 30506




VIVIENNE B



Stefanie Bloom | 404.821.9807 | 8260 Wallace Wood Rd, Gainesville, GA 30506



678-578-6819
DAVIDPATTERSONHOMES.COM

©2025 BHH Affiliates, LLC. An independently operated subsidiary of HomeServices of America, Inc., a Berkshire Hathaway affiliate, and a franchisee of BHH Affiliates, LLC.
Berkshire Hathaway HomeServices and the Berkshire Hathaway HomeServices symbol are registered service marks of Columbia Insurance Company, a Berkshire Hathaway affiliate.
All information is believed to be accurate but is not warranted and subject to errors, omissions, changes, or withdrawal without prior notice. Equal Housing Opportunity. 

**BERKSHIRE
HATHAWAY** | GEORGIA
HOMESERVICES PROPERTIES

NEW HOMES DIVISION
CONDOS • SINGLE FAMILY • TOWNHOMES

5-19-25



Floor plan details:

- 2 CAR GARAGE: 22'5" x 24'10"
- MUD ROOM: 9'7" x 10'0" (with closet)
- KITCHEN: 12'5" x 19'10" (with REF.)
- PANTRY: 5'5" x 10'0"
- BATH: 1/2
- BATH #4
- COATS
- FOYER
- BEDROOM #5: 12'0" x 11'2" (with CLOSET)
- COVER. PORCH: 23'0" x 6'6"
- DINING ROOM: 10'5" x 17'4"
- GREAT ROOM: 22'8" x 17'4"
- OPT. COVERED REAR PORCH: 14'0" x 12'0"
- OPT. GARAGE
- OPT. LINEN CLOSET
- STAIRS (UP/DOWN)
- REAR PORCH STORAGE

The second floor plan includes the following rooms and features:

- OWNER BEDROOM:** 14'1" x 17'4". Includes a closet and a bay window.
- OWNER BATH:** Includes a shower, toilet, and sink.
- BEDROOM #2:** 12'0" x 13'6". Includes a closet.
- BEDROOM #3:** 14'5" x 12'0". Includes a closet.
- BEDROOM #4:** 14'5" x 12'2". Includes a closet.
- BATH #2:** Includes a toilet, sink, and bathtub.
- LOFT:** 10'6" x 15'1". Includes a closet.
- LAUNDRY:** Includes a sink and a closet.
- W.I.C. (Walk-In Closet):** Multiple closets throughout the floor.
- UNF. STORAGE:** Unfinished storage area.
- ENTRY:** Entry area with a closet.
- STAIRS:** Stairs leading up and down.

Stefanie Bloom | 404.821.9807 | 8260 Wallace Wood Rd, Gainesville, GA 30506



**BERKSHIRE
HATHAWAY**
HOMESERVICES

NEW HOMES DIVISION
CONDOS • SINGLE FAMILY • TOWNHOMES



VIVIENNE C



Stefanie Bloom | 404.821.9807 | 8260 Wallace Wood Rd, Gainesville, GA 30506



1ST FLOOR



5-19-25