



---

## SCARLETT A


---



Stefanie Bloom | 404.821.9807 | 8260 Wallace Wood Rd, Gainesville, GA 30506



678-578-6819  
DAVIDPATTERSONHOMES.COM

©2025 BHH Affiliates, LLC. An independently operated subsidiary of HomeServices of America, Inc., a Berkshire Hathaway affiliate, and a franchisee of BHH Affiliates, LLC. Berkshire Hathaway HomeServices and the Berkshire Hathaway HomeServices symbol are registered service marks of Columbia Insurance Company, a Berkshire Hathaway affiliate. All information is believed to be accurate but is not warranted and subject to errors, omissions, changes, or withdrawal without prior notice. Equal Housing Opportunity. 

**BERKSHIRE  
HATHAWAY** | GEORGIA  
HOMESERVICES PROPERTIES

**NEW HOMES DIVISION**  
CONDOS • SINGLE FAMILY • TOWNHOMES

5-19-25



This floor plan illustrates a 2-story residence with a 2-car garage (22'5" x 23'2") and a 2-car carport (8'0" x 10'0"). The main living area includes a dining room (13'1" x 10'0"), a kitchen (13'1" x 19'3") with a refrigerator, and a great room (19'4" x 17'1") featuring a fireplace and a large window. The sleeping quarters consist of an owner's bedroom (14'7" x 17'1") with a walk-in closet, a laundry room, a 1/2 bath, and a study/office (10'6" x 11'2"). The plan also shows a mud room, a pantry (5 sh.), a foyer, and a central hall. A rear porch (18'3" x 10'0") is available as an optional feature. The overall dimensions of the house are 36'0" wide by 48'0" deep.

This floor plan shows a 3-bedroom house with a central loft and several attics. The layout includes:

- Bedroom #1:** Located at the bottom left, measuring 11'6"x 13'6". It has a closet and a door leading to a small shaded area labeled "ATTIC".
- Bedroom #2:** Located at the bottom right, measuring 14'6"x 13'6". It has a closet and a door leading to a small shaded area labeled "ATTIC".
- Bedroom #3:** Located at the top left, measuring 13'1"x 11'8". It has a closet and a door leading to a small shaded area labeled "ATTIC".
- Bathrooms:** There are three bathrooms: one in Bedroom #1, one in Bedroom #2, and one in Bedroom #3.
- Loft:** A central open area measuring 17'4"x 9'4" with a staircase leading up to it.
- Attics:** There are four attics: one in the top left, one in the top right, one in the bottom left, and one in the bottom right.
- Other Features:** The plan includes a "W.I.C." (Walk-In Closet) in the top left, a "W.I.C." in the bottom left, and a "W.I.C." in the bottom right. There are also "ATTIC ACCESS" points and a "CLOSET" in the bottom right.

5-19-25



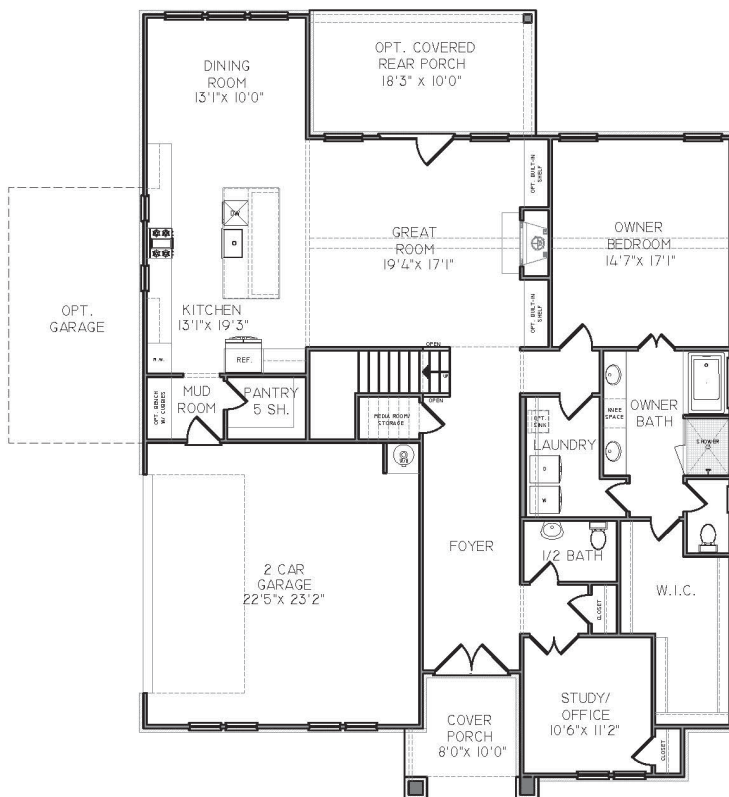
## SCARLETT B



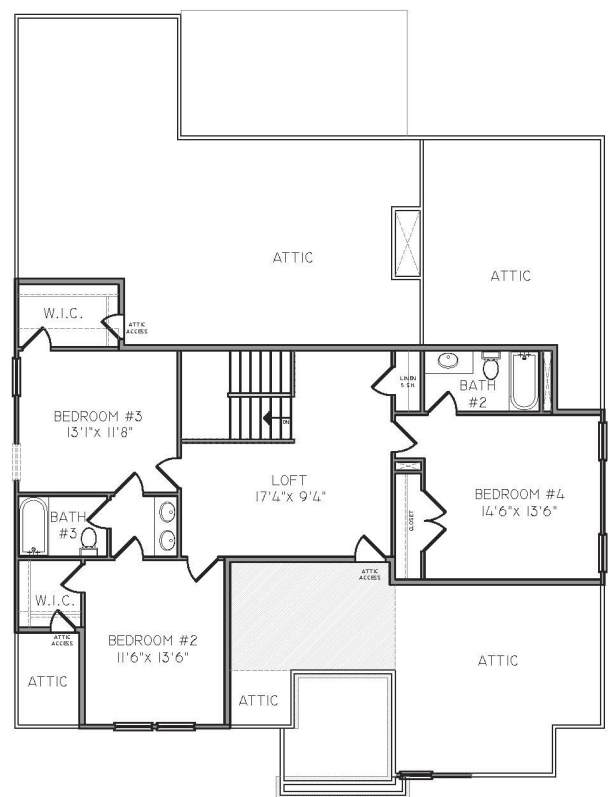
Stefanie Bloom | 404.821.9807 | 8260 Wallace Wood Rd, Gainesville, GA 30506

CREEKSIDE  
OVERLOOK

SCARLETT B



## 1ST FLOOR



## 2ND FLOOR

Stefanie Bloom | 404.821.9807 | 8260 Wallace Wood Rd, Gainesville, GA 30506



DAVID PATTERSON  
HOMES

678-578-6819  
DAVID PATTERSON HOMES.COM

©2025 BHH Affiliates, LLC. An independently operated subsidiary of HomeServices of America, Inc., a Berkshire Hathaway affiliate, and a franchisee of BHH Affiliates, LLC. Berkshire Hathaway HomeServices and the Berkshire Hathaway HomeServices symbol are registered service marks of Columbia Insurance Company, a Berkshire Hathaway affiliate. All information is believed to be accurate but is not warranted and subject to errors, omissions, changes, or withdrawal without prior notice. Equal Housing Opportunity. 

**BERKSHIRE  
HATHAWAY**  
HOMESERVICES

**NEW HOMES DIVISION**  
CONDOS • SINGLE FAMILY • TOWNHOMES

5-19-25



---

## SCARLETT C

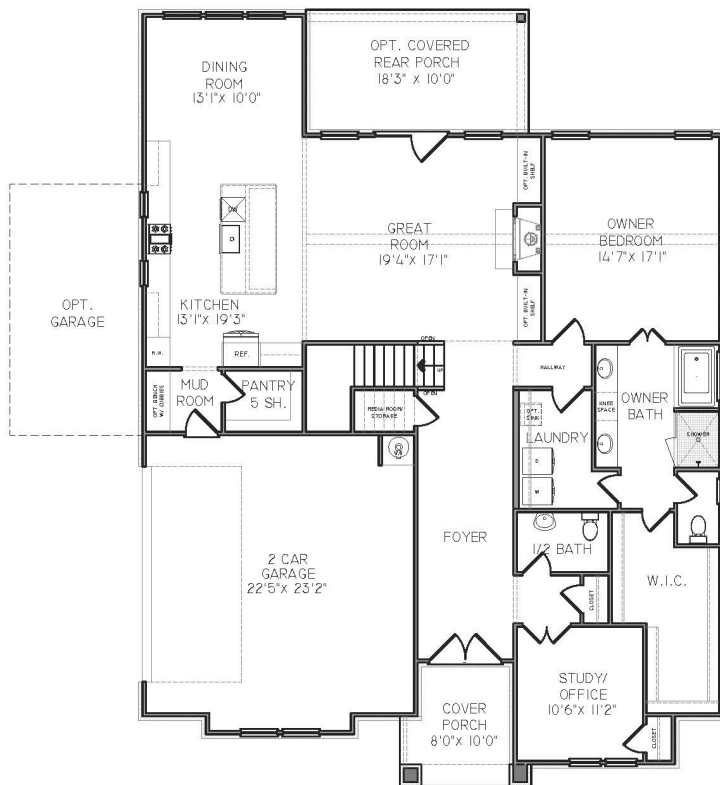
---



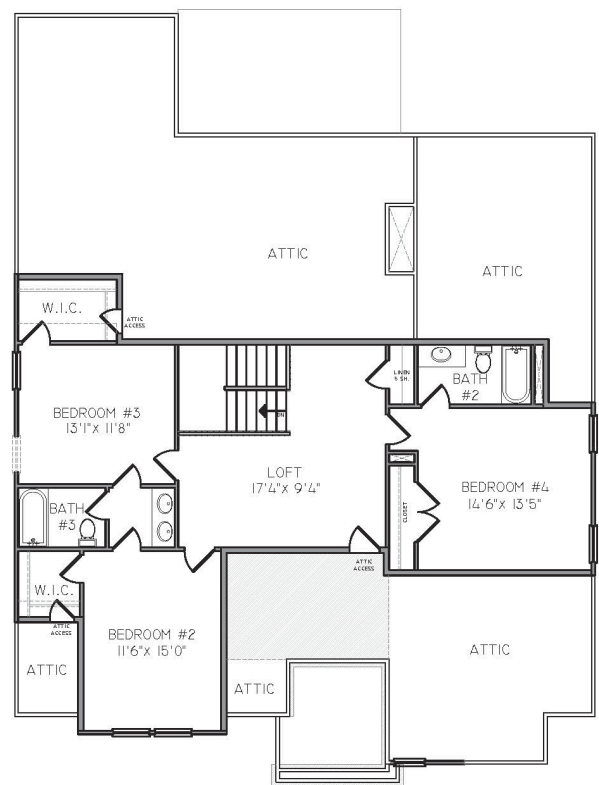
Stefanie Bloom | 404.821.9807 | 8260 Wallace Wood Rd, Gainesville, GA 30506



## SCARLETT C



1ST FLOOR



2ND FLOOR

Stefanie Bloom | 404.821.9807 | 8260 Wallace Wood Rd, Gainesville, GA 30506